

RNAV (GPS) RWY 32

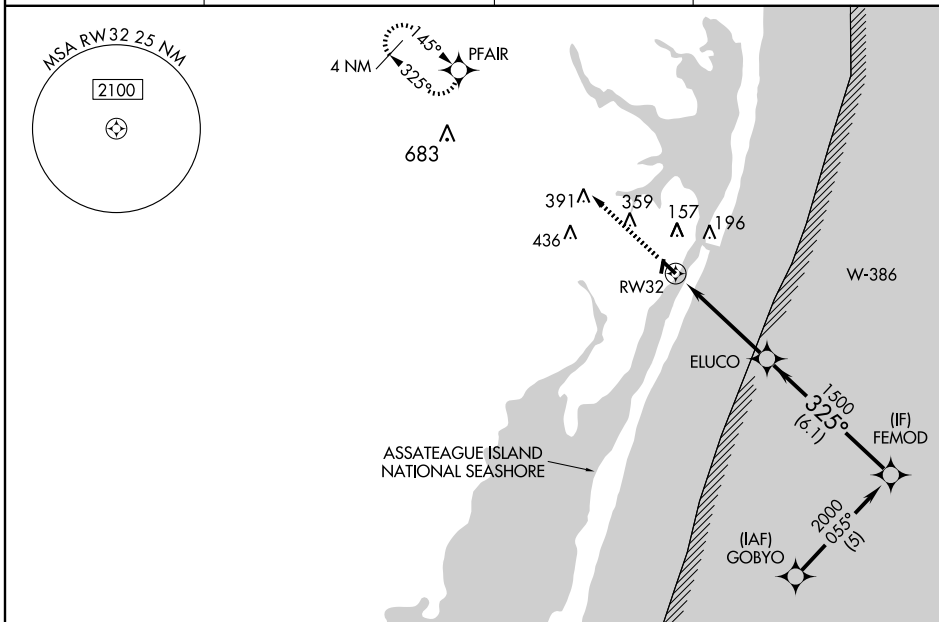
OCEAN CITY MUNI (OXB)

WAAS CH 40413 W32A	APP CRS 325°	Rwy Idg 4072 TDZE 11 Apt Elev 11
--	------------------------	---

▼ For uncompensated Baro-VNAV systems, LNAV/VNAV NA below -15°C (5°F) or above 48°C (118°F).
 ▲ DME/DME RNP -0.3 NA. Baro-VNAV and VDP NA when using Salisbury altimeter setting. When local altimeter setting not received, use Salisbury altimeter setting and increase all DA 48 feet and all MDA 60 feet, increase LNAV/VNAV all Cats, LNAV Cats C/D and Circling Cats C/D visibilities ¼ mile.

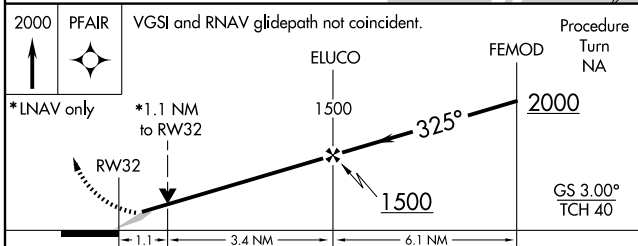
MISSED APPROACH: Climb to 2000 direct PFAIR and hold.

ASOS 119.025	PATUXENT APP CON * 127.95 314.0	CLNC DEL 121.75	UNICOM 123.05 (CTAF) 0
------------------------	---	---------------------------	----------------------------------



NE-3, 23 SEP 2010 to 21 OCT 2010

NE-3, 23 SEP 2010 to 21 OCT 2010



CATEGORY	A	B	C	D
LPV DA		261-1	250 (300-1)	
LNAV/VNAV DA		289-1	278 (300-1)	
LNAV MDA	380-1	369 (400-1)		380-1½ 369 (400-1½)
CIRCLING	480-1	469 (500-1)	660-1¾ 649 (700-1¾)	720-2½ 709 (800-2½)

